



BAPEN

*Putting patients at the centre
of good nutritional care*

Nutritional Care Tool Annual Report 2017

Dr Ailsa Brotherton

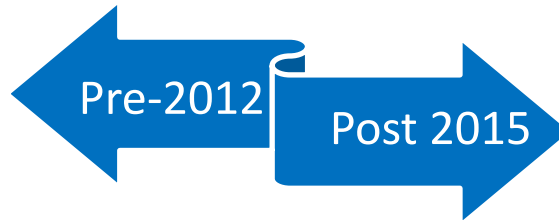
On behalf of the Quality and Safety
Committee



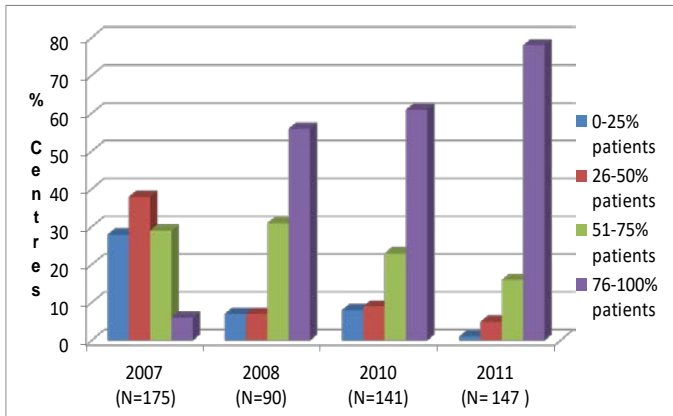
Why did BAPEN develop a new measurement tool?

The focus in healthcare is shifting from standalone audits to quality improvement informed by audits

- Data collection was paper based
- One week per year selected for national nutrition screening audit
- Transfer of data to electronic database by hand
- Analysis and written report time consuming



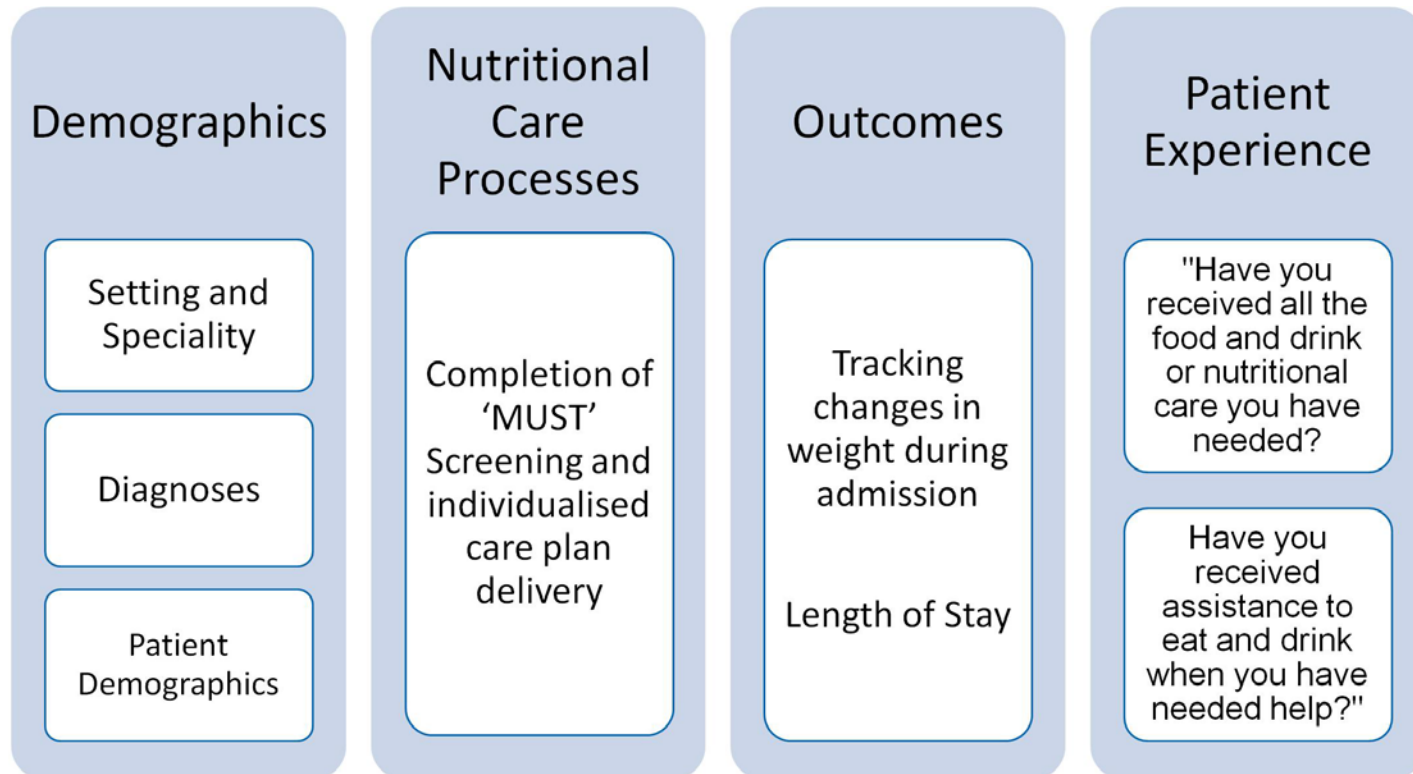
- Data collection via a web platform
- Opportunity for frequent data collection
- Scope for extensive analytics with a nutrition dashboard
- Instant charting and tracking of data over time using funnel plots, pareto charts and run charts



Aim

To design a web-based, simple national nutritional care Tool to enable clinicians and organisations to measure the different elements that are required for the delivery of good nutritional care (screening, care plans, outcomes and patient experience) in order to identify targets for local improvements.

What does the tool measure?





BAPEN

*Putting patients at the centre
of good nutritional care*

What does the tool measure?

Organisational details

- Organisation name
- Ward/unit
- Speciality
- Date of collection
- Professional group undertaking the survey

Demographics

- Age group
- Feeding route
- Setting
- Diagnosis

Nutritional care

- Screening (including score on admission)
- Re-screening
- Nutritional care plan – documented and implemented
- Current weight
- Unplanned weight loss
- Height
- Acute illness AND has there been, or likely to be, no nutritional intake for more than 5 days
- Subjective criteria
- Barriers to nutritional screening

Patient Experience questions

- Have you received all the food and drink or nutritional care you have needed?
- Have you received assistance to eat and drink when you have needed help?

Headline results from the 2017 Report?



BAPEN

*Putting patients at the centre
of good nutritional care*



77% of organisations reported having a Nutrition Steering Committee

73% reported having a Nutrition Support Team

57% of the organisations employ specialist nutrition nurses.

Median number of Specialist Nutrition Nurses where in post = **1.0 wte**

2.93 specialist nutrition nurses per 1000 available beds

Organisational level Data

Organisational Level Data



BAPEN

*Putting patients at the centre
of good nutritional care*

97.1%

- Undertaking regular audits of nutritional screening

51.4%

- Undertaking regular audits of nutrition care plans

27.1%

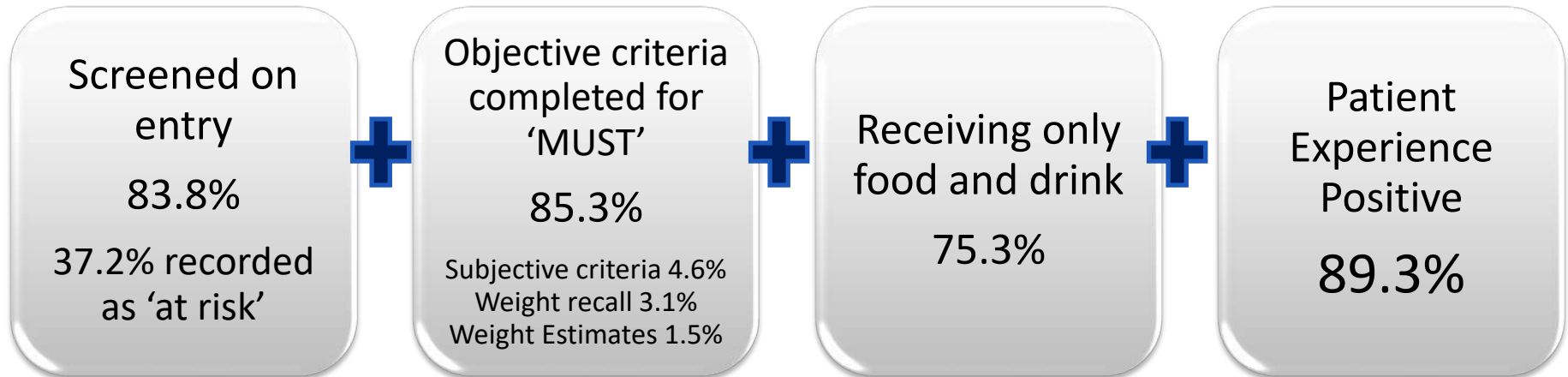
- Tracking Nutrition Outcomes

12.7%

- Undertaking regular audits of intentional rounding where nutrition is included in the intentional rounding tool used

Patient Level data

Nutritional Screening, Care, Outcomes and Patient Experience

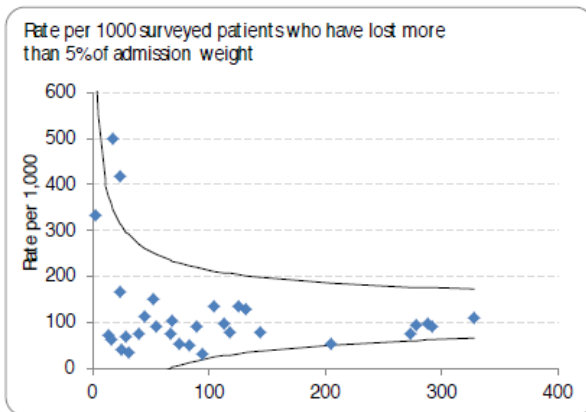
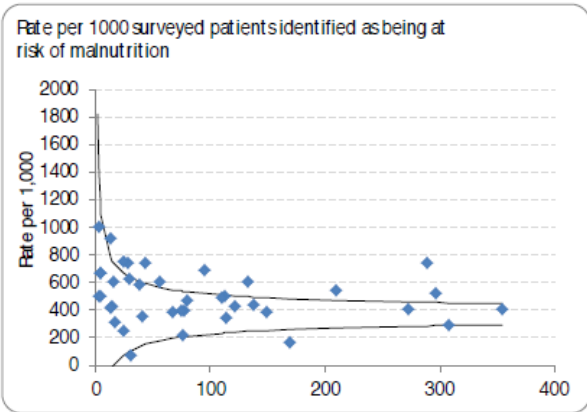
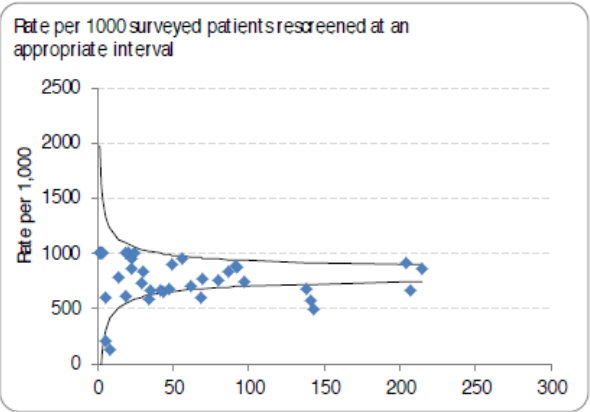
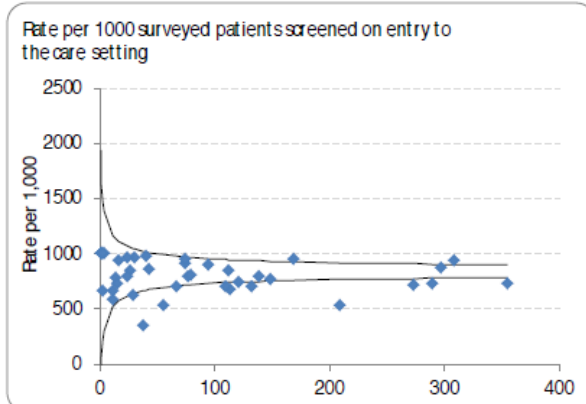
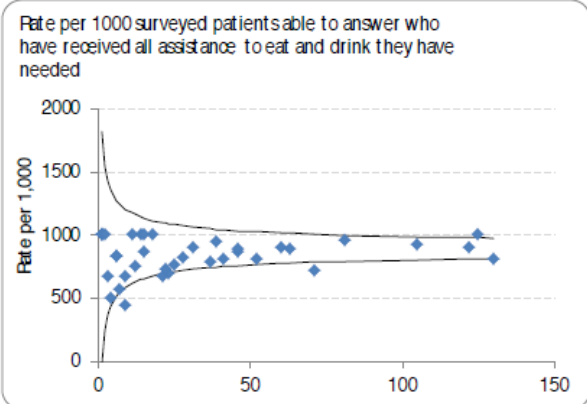
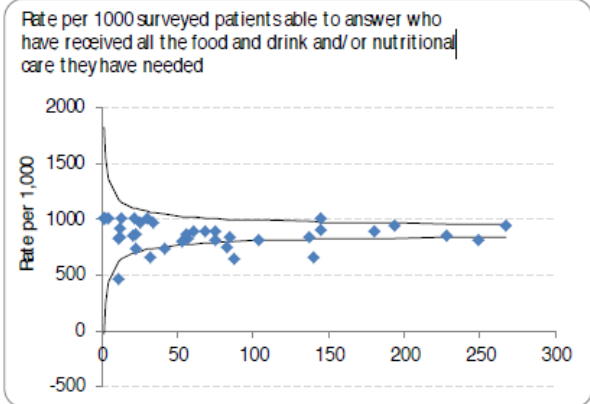


Approximately 8% of patients surveyed showed a loss of 5% or more of body weight during their stay *

* Note small data set



Understanding variation in Nutritional Care



Residential care
Personal health budgets
Employment and Support Allowance
Health and wellbeing boards
Local area teams
Needs assessment
Personalisation
Nursing care
Carer's Allowance
Care co-ordination
Accommodation costs
Primary care
NHS
Eligibility criteria
NHS Continuing Healthcare
Home care
Financial assessment
Specialist care
Local authorities
Community care
Means testing
Attendance Allowance
Palliative care
Registered Nursing Care Contribution
Disability Living Allowance/PIP
Self-directed support

What are the benefits of using the new tool in your organisation?

The first tool nationally available that will enable you to measure the quality of nutritional care delivered to your patients and to track improvements over time

Provision of robust assurance to your trust board, through the nutritional care dashboard

Point of care measures – facilitate delivering improvements whilst the patient is still in your care

It is free to all NHS and Social Care Organisations in the UK

Completely voluntary – you decide the frequency and scale of use

If used across an organisation will highlight areas of excellent practice and areas where improvements are needed

Contains patient experience questions, as well as screening, care planning and outcomes

Guide to Using the Tool

BAPEN Nutritional Care Tool 5 Steps to Success



Step 1

Register your organisation by filling in the short form. One of the team will be in touch to confirm you're set up and ready to go!

Start here: [Registration Instructions](#)

Step 2

Need to make the case for collection within your organisation? Once you're registered, take it to the board with our pre-written board or governance committee paper, just add your logo!

Download it here: [Board or governance committee paper](#)

Step 3

Not sure where to start? Familiarise yourself with how the tool works, set up wards or teams and set individuals up ready to collect data with our handy user guide.

Get going here: [Interactive user guide](#)

Step 4

Collect some data on the wards or within the teams you have set up. You can collect data during our collection weeks or as often as you like; whatever works for you!

See our collection weeks here: [Collection weeks](#)

Step 5

Review your data using the online dashboards which are updated weekly. See how these plots can help with your learning and improvement with our interactive e-learning module!

Take a look at the e-learning here: [Analytics learning module](#)

www.bapen.org.uk

The next four national nutritional care data collection weeks are:

- Week commencing 12th December 2017
- Week commencing 12th March 2018 (Nutrition and Hydration week)
- Week Commencing 11th June 2018
- Week commencing 10th September 2018

**Register to take part:
www.data.bapen.org.uk**